

## KEY FEATURES



### Grade 304 Stainless Steel Build

Tough, hygienic, and easy to clean



### Efficient Cooling

Ventilated cooling for uniform temperature distribution



### Sleek and Practical

Self-closing door with flush handles and removable gaskets



### Flexible Storage

PVC-coated grid adjustable shelves included



### Frost Free

Auto defrost system



### Front Adjustable Legs & Rear Wheels

Adjustable legs and rear wheels allow easy leveling in front and smooth mobility from the back

This compact undercounter unit combines a sleek stainless steel design with durable, hygienic construction for easy cleaning and reliable performance in busy kitchens.



Copeland Digital Controller

**R600a**

Refrigerant (chiller)

**R290**

Natural Refrigerant (freezer)

**+30°C**

High Ambient Temperature

**58mm**

High Insulation Density

## SPECIFICATIONS



### ALT-UVC-101

single door undercounter chiller



### ALT-UVF-101

single door undercounter freezer



### ALT-UPV-R361

single door upright chiller



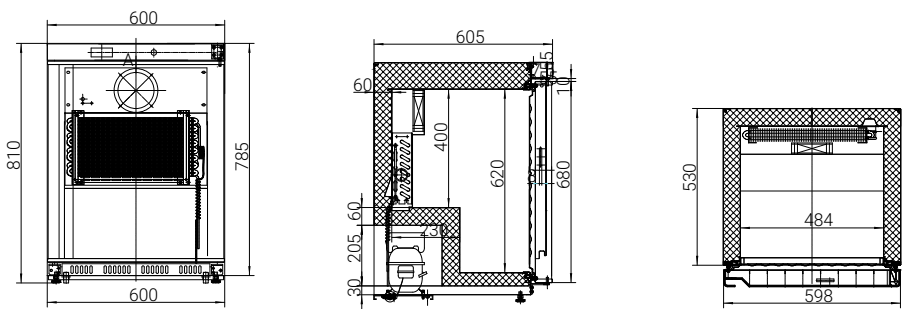
### ALT-UPV-f361

single door upright freezer

External Dimensions	600×605×810mm	600×605×810mm	600×595×1855mm	600×595×1855mm
Capacity	101L	101L	361L	361L
Shelf Pcs	3	3	4	4
Power	150W	180W	135W	300W
Voltage	220V	220V	220V	220V
Frequency	50Hz	50Hz	50Hz	50Hz
Temperature Range	0~+8°C	≤-18°C	-2~+8°C	-10~-25°C
Mode of Refrigeration	built-in	built-in	built-in	built-in
Packing Dimensions	680×650×900mm	680×650×900mm	680×650×2100mm	680×650×2100mm



ALT-UVC-101/ALT-UVF-101



ALT-UPV-R361/ALT-UPV-F361

