

GREENLINE MINI

Instruction Manual



❖ Upright freezer/chiller

- ALT-UPV-R361
- ALT-UPV-F361



❖ Under freezer/chiller

- ALT-UVC-101
- ALT-UVF-101

PLEASE READ THE OPERATION MANUAL BEFORE USING.

Safety Tips

- Position on a flat, stable surface.
- A service agent/qualified technician should carry out installation and any repairs if required. Do not remove any components or service panels on this product.
- Consult Local and National Standards to comply with the following:
 - Health and Safety at Work Legislation
 - EN Codes of Practice
 - Fire Precautions
 - IEE Wiring Regulations
 - Building Regulations
- DO NOT use jet/pressure washers to clean the appliance.
- DO NOT use the appliance outside.
- DO NOT use this appliance to store medical supplies.
- DO NOT use electrical appliances inside the appliance (e.g. heaters, ice cream makers etc.).
- DO NOT allow oil or fat to come into contact with the plastic components or door seal. Clean immediately if contact occurs.
- DO NOT store products on top of the appliance.
- Bottles that contain a high percentage of alcohol must be sealed and placed vertically in the refrigerator.
- Always carry, store and handle the appliance in a vertical position and move by holding the base of the appliance.
- Always switch off and disconnect the power supply to the unit before cleaning.
- Keep all packaging away from children. Dispose of the packaging in accordance with the regulations of local authorities.
- If the power cord is damaged, it must be replaced by a agent or a recommended qualified technician in order to avoid a hazard.
- This appliance is not attended for use by persons (including children) with reduced physical, sensory or mental capabilities, or lack of experience or knowledge, unless they have been given supervision or instruction concerning the use of the appliance by a person responsible for their safety.
- Children should be supervised to ensure that they do not play with the appliance.

Caution Risk of Fire



- Do not store explosive substances such as aerosol cans with a flammable propellant in this appliance.
- **Warning:** Keep clear of obstruction all ventilation openings in the appliance enclosure or in the structure for building-in.
- **Warning:** Do not use mechanical devices or other means to accelerate the defrosting process, other than those recommended by the manufacturer.
- **Warning:** Do not damage the refrigerant circuit.
- **Warning:** Do not use electrical appliances inside the food storage compartments of the appliance, unless they are the type recommended by the manufacturer.

Introduction

Please take a few moments to carefully read through this manual. Correct maintenance and operation of this machine will provide the best possible performance from your product.

Pack Contents

The following is included:

- Refrigerator / Freezer
- Shelves - Refrigerator/Freezer
ALT-UVC-101 x 3
ALT-UVC-101 x 3
ALT- UPV-R361 x 4
ALT- UPV-R361 x 4
- Keys x 2
- Spacers x 2
- Instruction Manual

Prides itself on quality and service, ensuring that at the time of packaging the contents are supplied fully functional and free of damage.

Should you find any damage as a result of transit, please contact your dealer immediately.

Installation

Note: If the unit has not been stored or moved in an upright position, let it stand upright for approximately 12 hours before operation.
If in doubt allow to stand.

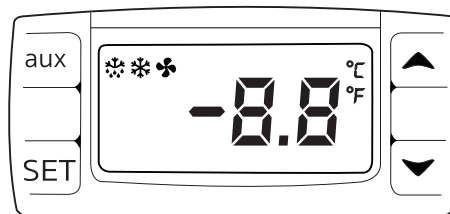
1. Remove the appliance from the packaging. Make sure that all protective plastic film and coatings are thoroughly removed from all surfaces.
2. Maintain a distance of 20cm (7 inches) between the unit and walls or other objects for ventilation. Increase this distance if the obstacle is a heat source.

Note: Before using the appliance for the first time, clean the shelves and interior with soapy water.

Operation

Control Panel

The control panel is located on the front of the appliance.



Turn On

1. Close the door of the appliance
2. Connect the appliance to a mains power supply.

Set the Operating Temperature

1. Press the SET button. The display will flash.
2. Press the ▼ or ▲ buttons to display the required temperature.
3. Press the SET button to store the temperature.

Manual Defrost

Press and Hold the defrost button "aux" for 2seconds light illuminates.

Storing Foods

To get the best results from your appliance, follow these instructions:

- Only store foodstuffs in the appliance when it has reached the correct operating temperature.
- Do not place uncovered hot food or liquid inside the appliance.
- Wrap or cover food where possible.
- Do not obstruct the fans inside the appliance.
- Avoid opening the doors for prolonged periods of time.

Lock/Unlock the Doors

- A lock is fitted to the doors to ensure foodstuffs are kept secure within your appliance.
- Use the keys provided to lock/unlock the door.

Cleaning, Care & Maintenance



Switch off and disconnect from the power supply before cleaning.

- Clean the interior of the appliance as often as possible.
- Do not use abrasive cleaning agents. These can leave harmful residues.
- Clean the door seal with water only.
- Always wipe dry after cleaning.
- Do not allow water used in cleaning to run through the drain hole into the evaporation pan.
- Take care when cleaning the rear of the appliance. Sharp edges can cut.
- A agent or qualified technician must carry out repairs if required.

Cleaning the Condenser

Periodically cleaning the condenser can extend the life of the appliance.

Replacing the Lamp

1. Switch Off and disconnect the appliance from the power supply
2. Remove the plastic cover
3. Twist the lamp in its socket and release
4. Remove the lamp and replace the new one of the same power rating
5. Replace the plastic cover

Troubleshooting

If your appliance develops a fault, please check the following table before making a call to the Helpline or your dealer.

Fault	Probable Cause	Solution
The appliance is not working	The unit is not switched on	Check the unit is plugged in correctly and switched on
	Plug and lead are damaged	Call agent or qualified Technician
	Fuse in the plug has blown	Replace the fuse
	Power supply	Check power supply
	Internal wiring fault	Call agent or qualified Technician
The appliance turns on, but the temperature is too high/low	Too much ice on the evaporator	Defrost the appliance
	Condenser blocked with dust	Clean the condenser
	Doors are not shut properly	Check doors are shut, and seals are not damaged
	Appliance is located near a heat source or air flow to the condenser is being interrupted	Move the refrigerator to a more suitable location
	Ambient temperature is too high	Increase ventilation or move appliance to a cooler position
	Unsuitable foodstuffs are being stored in the appliance	Remove any excessive hot foodstuffs or blockages to the fan
	Appliance is overloaded	Reduce the amount of food stored in the appliance
The appliance is leaking water	The appliance is not properly levelled	Adjust the screw feet to level the appliance (if applicable)
	The discharge outlet is blocked	Clear the discharge outlet
	Movement of water to the drain is obstructed	Clear the floor of the appliance (if applicable)
	The water container is damaged	Call agent or qualified Technician
	The drip tray is overflowing	Empty the drip tray (if applicable)

Fault	Probable Cause	Solution
The appliance is unusually loud	The safety band has not been removed	Remove the safety band
	Loose nut/screw	Check and tighten all nuts and screws
	The appliance has not been installed in a level or stable position	Check installation position and change if necessary
The display lamp does not light	Replace lamp	Call agent or qualified Technician

Electrical Wiring

Appliances are supplied with a 3 pin, molded, BS1363 plug and lead, with a 13-amp fuse as standard.

The plug is to be connected to a suitable mains socket.

Appliances are wired as follows:

- Live wire (colored brown) to terminal marked L
- Neutral wire (colored blue) to terminal marked N
- Earth wire (colored green/yellow) to terminal marked E

All appliances must be earthed, using a dedicated earthing circuit.



If in doubt, consult a qualified electrician.

Electrical isolation points must be kept clear of any obstructions. In the event of any emergency disconnection being required they must be readily accessible.

Disposal

EU regulations require refrigeration product to be disposed of by specialist companies who remove or recycle all gasses, metal and plastic components.

Consult your local waste collection authority regarding disposal of your appliance. Local authorities are not obliged to dispose of commercial refrigeration equipment but may be able to offer advice on how to dispose of the equipment locally.

Alternatively call the helpline for details of national disposal companies within the EU.

Compliance

The WEEE logo on this product or its documentation indicates that the product must not be disposed of as household waste. To help prevent possible harm to human health and/or the environment, the product must be disposed of in an approved and environmentally safe recycling process. For further information on how to dispose of this product correctly, contact the product supplier, or the local authority responsible for waste disposal in your area.

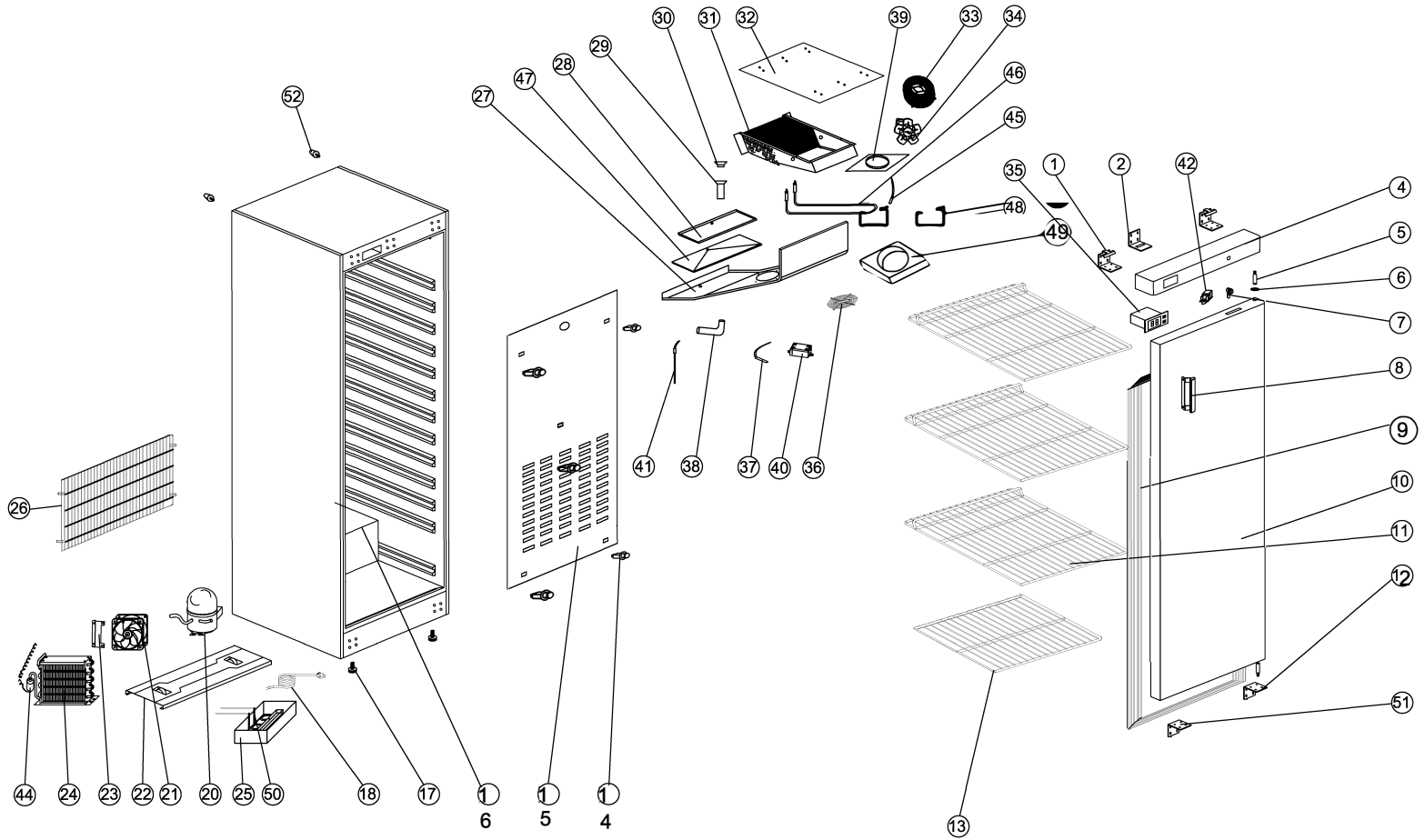


Parts have undergone strict product testing in order to comply with regulatory standards and specifications set by international, independent, and federal authorities.



Products have been approved to carry the following symbol:

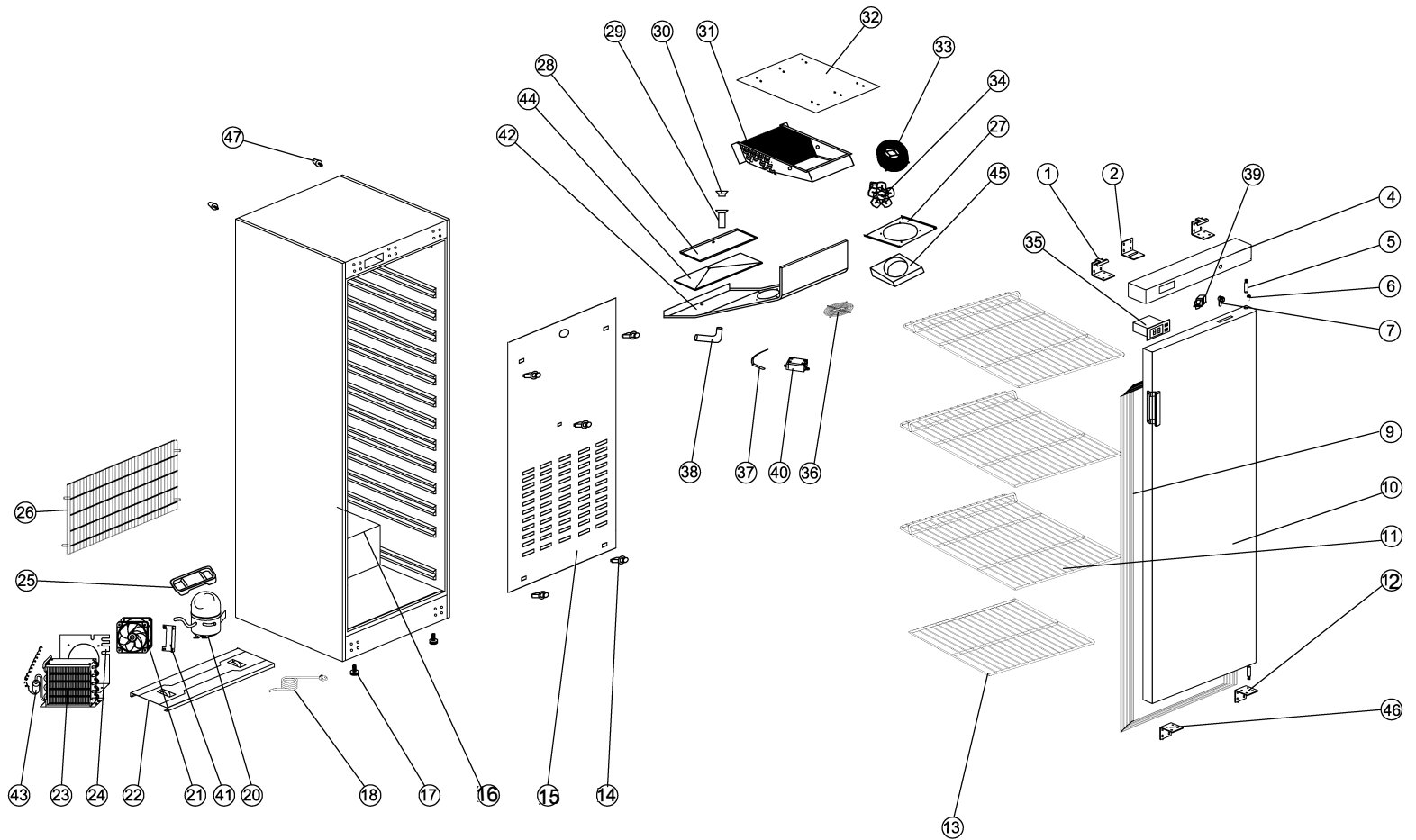
ALT-UPV-F361



NO.	PART NAME	QTY.
1	UP HINGE	2PCS
2	HOOK OF LOCK	1PC
4	FRONT PANEL	1PC
5	HINGE AXIS	2PCS
6	BUSHING	1PC
7	LOCK	1PC
9	GASKET	1PC
10	DOOR	1PC
11	SHELF	3PCS
12	DOWN HINGE	1PC
13	BOTTOM SHELF	1PC
14	EVAPORATOR FIXER	5PCS
15	AIR FLOW CONDUCT BOARD	1PC
16	BODY	1PC
17	FEET	2PCS
18	PLUG	1PC
20	COMPRESSOR	1PC
21	CONDENSER FAN	1PC
22	UNITE BOARD	1PC
23	CONDENSER FAN FIXED BOARD	1PC
24	CONDENSER	1PC
25	WATER BOX	1PC
26	UNITE ROOM GRILLS	1PC
27	CIRCLE FAN COVER	1PC
28	EVAPORATOR WATER PAN	1PC

NO.	PART NAME	QTY.
29	INTERNAL WATER PIPE NUT	1PC
30	OUTSIDE WATER PIPE BOLT	1PC
31	EVAPORATOR	1PC
32	FIXED BOARD OF EVAPORATOR	1PC
33	BASKET GUARD GRILL	1PC
34	FAN BLADE	1SET
35	THERMOSTAT	1PC
36	FAN GRILL	1PC
37	SENSOR JST	1PC
38	WATER PIPE	1PC
39	FAN SUPPORT	1PC
40	SENSOR FIXED BOX	1PC
41	WATER PIPE HEATER	1PC
42	DOOR SWITCH	1PC
44	FILTER DRIER	1PC
45	PROTECTOR FOR HEATING ELEMENT	1PC
46	DEFROST HEATING ELEMENT	1PC
47	KEEP WARM BOARD	1PC
48	JUMPRING FOR HEATING ELEMENT	2PCS
49	WIND GUIDE FOAM	1PC
50	EVAPORATE PIPE	1PC
51	DOWN HINGE /LEFT	1PC
52	LOCATION KNOB	2PCS

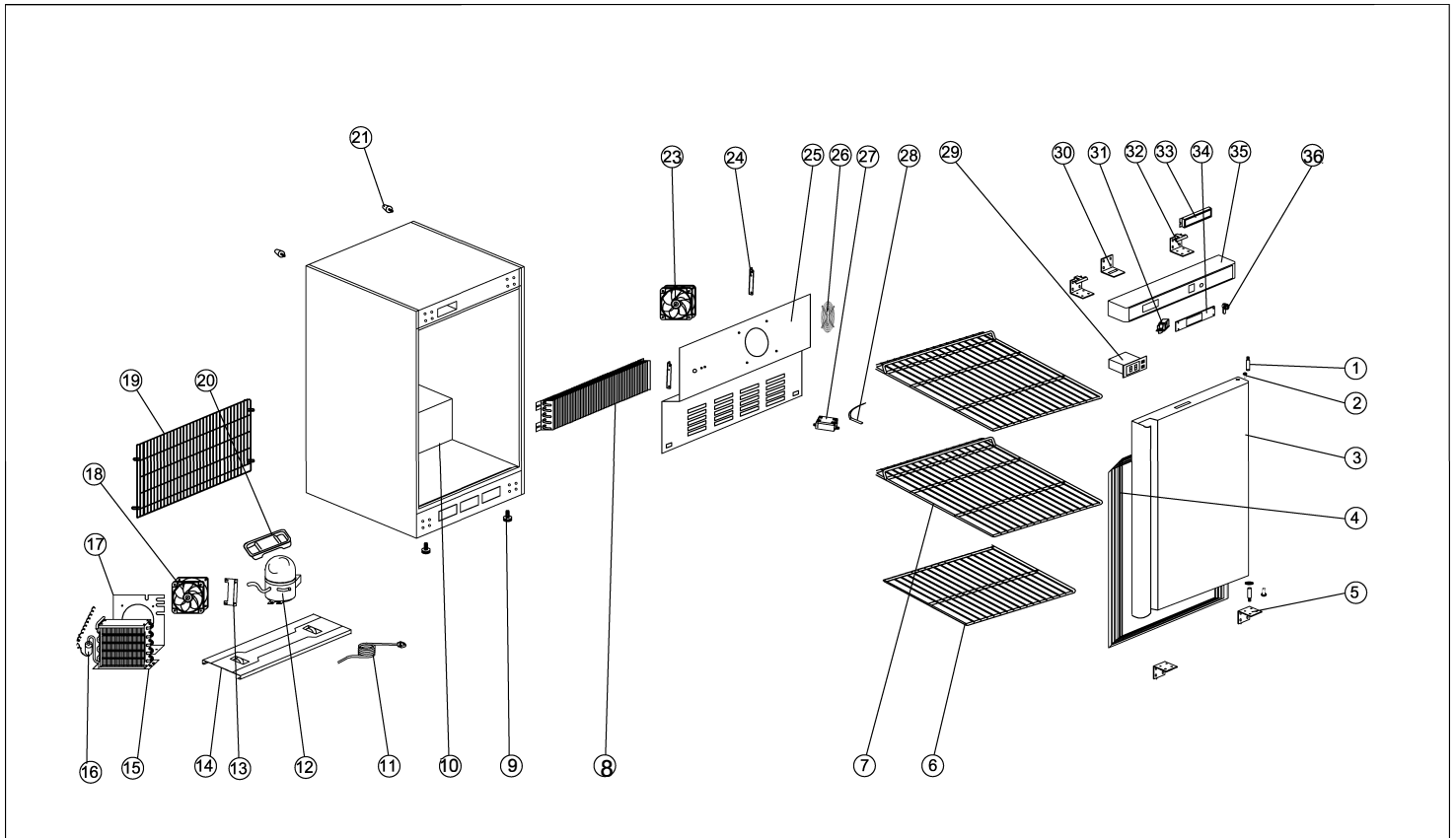
ALT-UPV-R361



NO.	NAME	QTY
1	UP HINGE	2PCS
2	HOOK OF LOCK	1PC
4	FRONT PANEL	1PC
5	HINGE AXIS	2PCS
6	BUSHING	1PC
7	LOCK	1PC
9	GASKET	1PC
10	DOOR	1PC
11	SHELF	3PCS
12	DOWN HINGE	1PC
13	BOTTOM SHELF	1PC
14	EVAPORATOR FIXER	5PCS
15	AIR FLOW CONDUCT BOARD	1PC
16	BODY	1PC
17	FEET	2PCS
18	PLUG	1PC
20	COMPRESSOR	1PC
21	CONDENSER FAN	1PC
22	UNITE BOARD	1PC
23	CONDENSER	1PC
24	CONDENSER FAN SUPPORT	1PC
25	WATER BOX	1PC
26	UNITE ROOM GRILLS	1PC

NO.	NAME	QTY
27	CIRCLE FAN SUPPORT	1PC
28	EVAPORATOR WATER PAN	1PC
29	INTERNAL WATER PIPE NUT	1PC
30	OUTSIDE WATER PIPE BOLT	1PC
31	EVAPORATOR	1PC
32	FIXED BOARD OF EVAPORATOR	1PC
33	WALL RING	1PC
34	FAN BLADE	1SET
35	THERMOSTAT	1PC
36	CIRCLE FAN COVER	1PC
37	SENSOR JST	1PC
38	WATER PIPE	1PC
39	DOOR SWITCH	1PC
40	SENSOR FIXED BOX	1PC
41	FAN SUPPORT	1PC
42	EVAPORATOR FAN COVER	1PC
43	FILTER DRIER	1PC
44	KEEP WARM BOARD	1PC
45	WIND GUIDE FOAM	1PC
46	DOWN HINGE /LEFT	1PC
47	LOCATION KNOB	2PCS

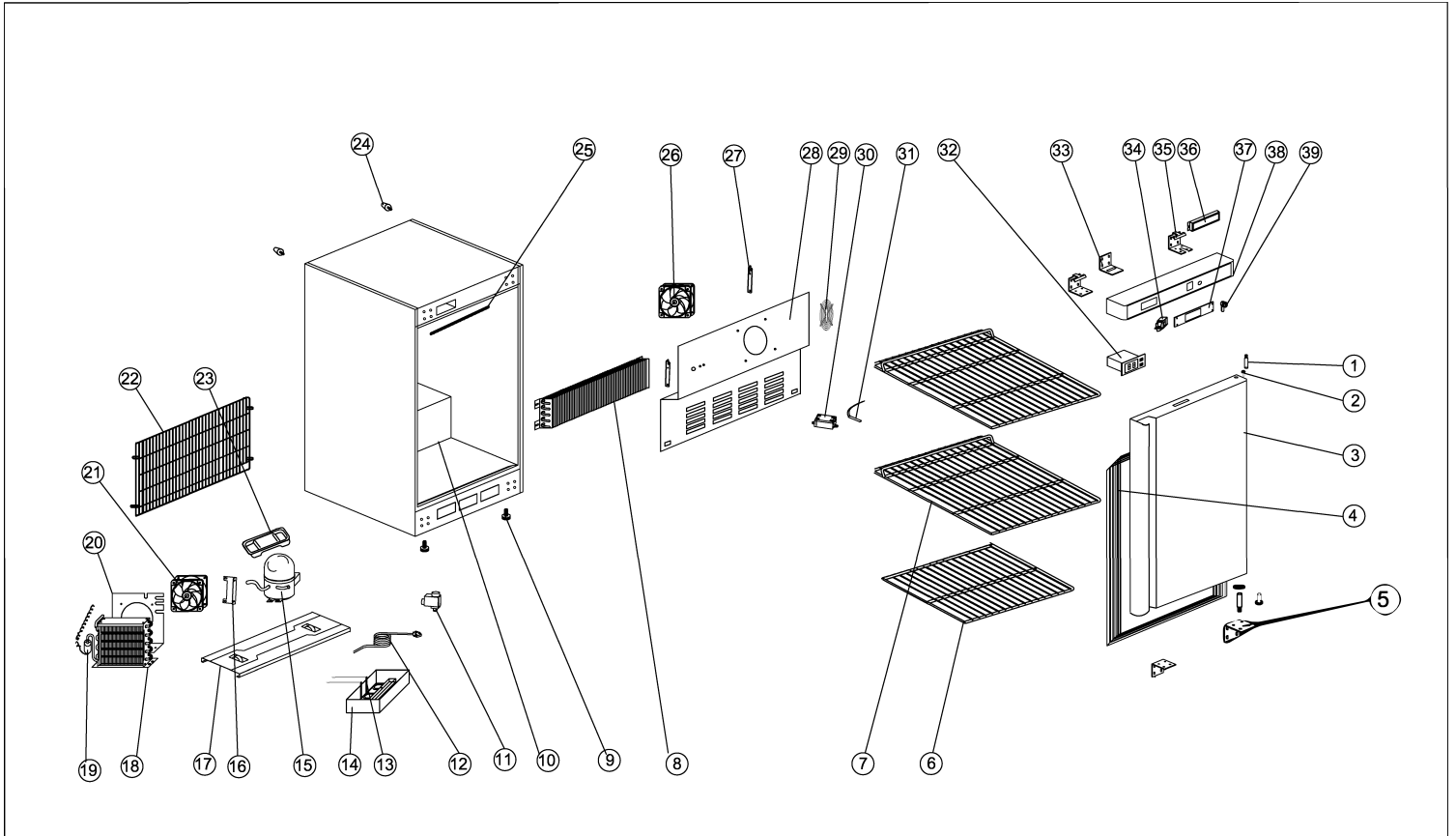
ALT-UVC-101



NO.	PART NAME	QTY.
1	HINGE AXIS	1PC
2	BUSHING	1PC
3	DOOR	1PC
4	GASKET	1PC
5	DOWN HINGE	2PCS
6	BOTTOM SHELF	1PC
7	SHELF	2PCS
8	EVAPORATOR	1PC
9	FEET	2PCS
10	BODY	1PC
11	PLUG	1PC
12	COMPRESSOR	1PC
13	FAN SUPPORT	1PC
14	UNITE BOARD	1PC
15	CONDENSER	1PC
16	FILTER DRIER	1PC
17	CONDENSER FAN SUPPORT	
18	CONDENSER FAN	1PC

NO.	PART NAME	QTY.
19	UNITE ROOM GRILLS	1PC
20	WATER BOX	1PC
21	LOCATION KNOB	2PCS
23	CIRCUIT FAN	1PC
24	FAN SUPPORT FIXER	2PCS
25	CIRCUIT FAN SUPPORT	1PC
26	WALL RING	
27	SENSOR FIXED BOX	1PC
28	SENSOR JST	1PC
29	THERMOSTAT	1PC
30	HOOK OF LOCK	1PC
31	DOOR SWITCH	1PC
32	UP HINGE	2PCS
33	LED POWER SUPPLIER	1PC
34	THERMOSTAT SUPPORT	1PC
35	FRONT PANEL	1PC
36	LOCK	1PC

ALT-UVF-101



NO.	PART NAME	QTY.
1	HINGE AXIS	1PC
2	BUSHING	1PC
3	DOOR	1PC
4	GASKET	1PC
5	DOWN HINGE	2PCS
6	BOTTOM SHELF	1PC
7	SHELF	2PCS
8	EVAPORATOR	1PC
9	FEET	2PCS
10	BODY	1PC
11	SOLENOID VALVE	1PC
12	PLUG	1PC
13	EVAPORATE PIPE	1PC
14	WATER BOX	1PC
15	COMPRESSOR	1PC
16	FAN SUPPORT	1PC
17	UNITE BOARD	1PC
18	CONDENSER	1PC
19	FILTER DRIER	1PC

NO.	PART NAME	QTY.
20	CONDENSER FAN SUPPORT	1PC
21	CONDENSER FAN	1PC
22	UNITE ROOM GRILLS	1PC
23	WATER BOX	1PC
24	LOCATION KNOB	2PCS
26	CIRCUIT FAN	1PC
27	FAN SUPPORT FIXER	2PCS
28	CIRCUIT FAN SUPPORT	1PC
29	WALL RING	
30	SENSOR FIXED BOX	1PC
31	SENSOR JST	1PC
32	THERMOSTAT	1PC
33	HOOK OF LOCK	1PC
34	DOOR SWITCH	1PC
35	UP HINGE	2PCS
36	LED POWER SUPPLIER	1PC
37	THERMOSTAT SUPPORT	1PC
38	FRONT PANEL	1PC
39	LOCK	1PC